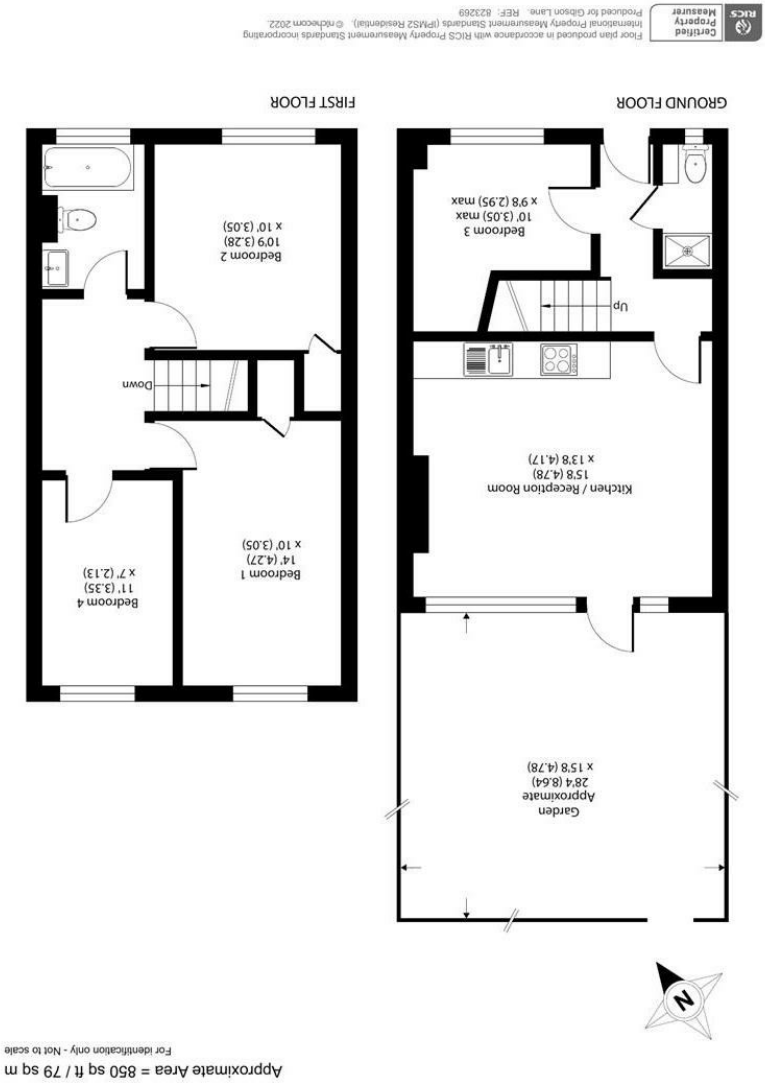
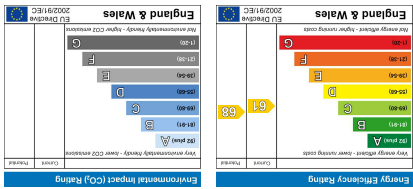


Important Information
All appliances listed in these details are only 'as seen' and have not been tested by Gibson Lane, nor have we sought certification of warranty or service, unless otherwise stated. Measurements, areas and distances are approximate. Floor plans and photographs are for guidance purposes only and must not be relied upon for any purpose. These details are offered on the understanding that all negotiations are made through this company. Neither these particulars, nor verbal representations, form part of any offer or contract, and their accuracy cannot be guaranteed.





- AVAILABLE 17th September 2025
- Ground Floor Split Level Flat
- Newly Refurbished
- Private Rear Garden
- 2 Double Bedrooms
- 2 Single Bedrooms
- Open-Plan Kitchen
- Tiled Bathroom With Bath & Shower
- Ideal For Student @ Roehampton University
- EPC Rating - D



£2,600 Per Calendar Month

Sherfield Gardens,
Roehampton,
London,
SW15 4PA



Description:

* AVAILABLE 17th September 2025 * With private rear garden.

Gibson Lane proudly present a newly refurbished spacious and modern four bedroom ground floor maisonette with PRIVATE REAR GARDEN which provides the perfect living environment for students. Internally the property provides spacious living arrangements with an open-plan fully fitted kitchen/lounge, two double bedrooms, two single bedrooms, ground floor W/C shower room and a tiled upstairs bathroom with bath & shower. The property is conveniently located for Roehampton University students and benefits from being just a short walk from the ever popular Richmond Park. Surrounded by lots of green spaces this is a great property for those who want to be close to local amenities and enjoy the outside surroundings.

- NEWLY REFURBISHED
- 2 Double Bedrooms
- 2 Single Bedrooms
- Open Plan Kitchen
- 2 Bathrooms
- 2 Showers
- 1 Bath
- 2 Toilets
- Private Rear Garden
- Fully Furnished
- 24 Hour Property Management Service
- EPC Rating - D

Location:

Sherfield Gardens is located just a short walk from the ever popular Richmond Park. The location is well served with many different transport links which include buses to Putney, Hammersmith and Kingston, the A3 is in very close by which provides quick access in and out of London. Close to various Universities and Queen Mary's Hospital.



Furnishing: Furnished
Local Authority: Wandsworth
Council Tax Band: C
Available Date: 17th September 2025
Deposit: £3,000
Tenancy Term: Long Term